

ONEhillsborough: A Children's Board of Hillsborough County (CBHC) Initiative



Every Hillsborough County resident should have the resources to be healthy and live in a thriving community regardless of race, ethnicity, or zip code.

How ONEhillsborough works

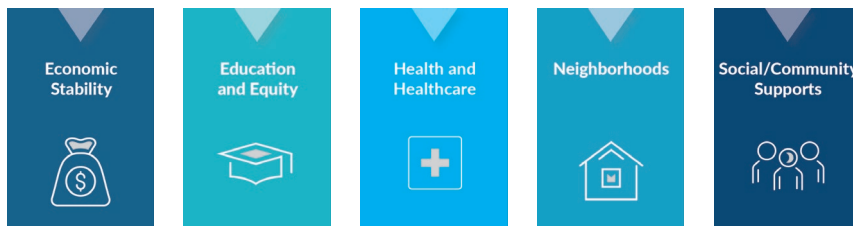
ONEhillsborough engages key stakeholders to gather and analyze information, develop plans, and implement activities designed to meet the needs of people living in select communities. It will be implemented in zip codes 33603, 33610, and 33619 and expanded throughout the county.

CBHC and strategic business, government, nonprofit and community partners help focus existing resources and programs on the unique needs of select communities to make a lasting positive impact on people living in those communities.

What is ONEhillsborough?

ONEhillsborough is a community-driven initiative structured around the Social Determinants of Health (SDOH). It is designed to implement tailored, holistic, and meaningful solutions to address long-term systemic issues and disparities that predominantly Black and Brown communities face within our county.

- Economic Stability
- Education and Equity
- Health and Healthcare
- Neighborhoods
- Social/Community Supports



ONEhillsborough Goals

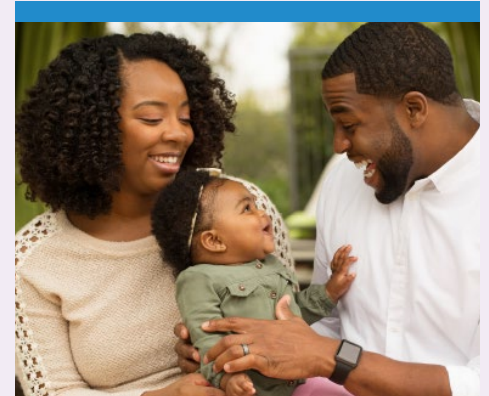
Our overarching goals are to ensure economically stable households, engaging learning environments, access to preventative healthcare and healthy living, safe neighborhoods with health promoting amenities, and easy access to supportive resources.

Onehillsborough's mission aligns with the following Children's Board of Hillsborough County Focus Areas:

- Children are Developmentally on Track
- Children are Healthy and Safe
- Children are Ready to Learn and Succeed
- Family Support

Genet Stewart
Director of Strategic Initiatives

Office (813) 204-1761
StewartTG@ChildrensBoard.org



ONEhillsborough's Unique Features

- Community Member Driven
- Social Determinants of Health
- Long-Term View



Children's Board
HILLSBOROUGH COUNTY

www.ChildrensBoard.org